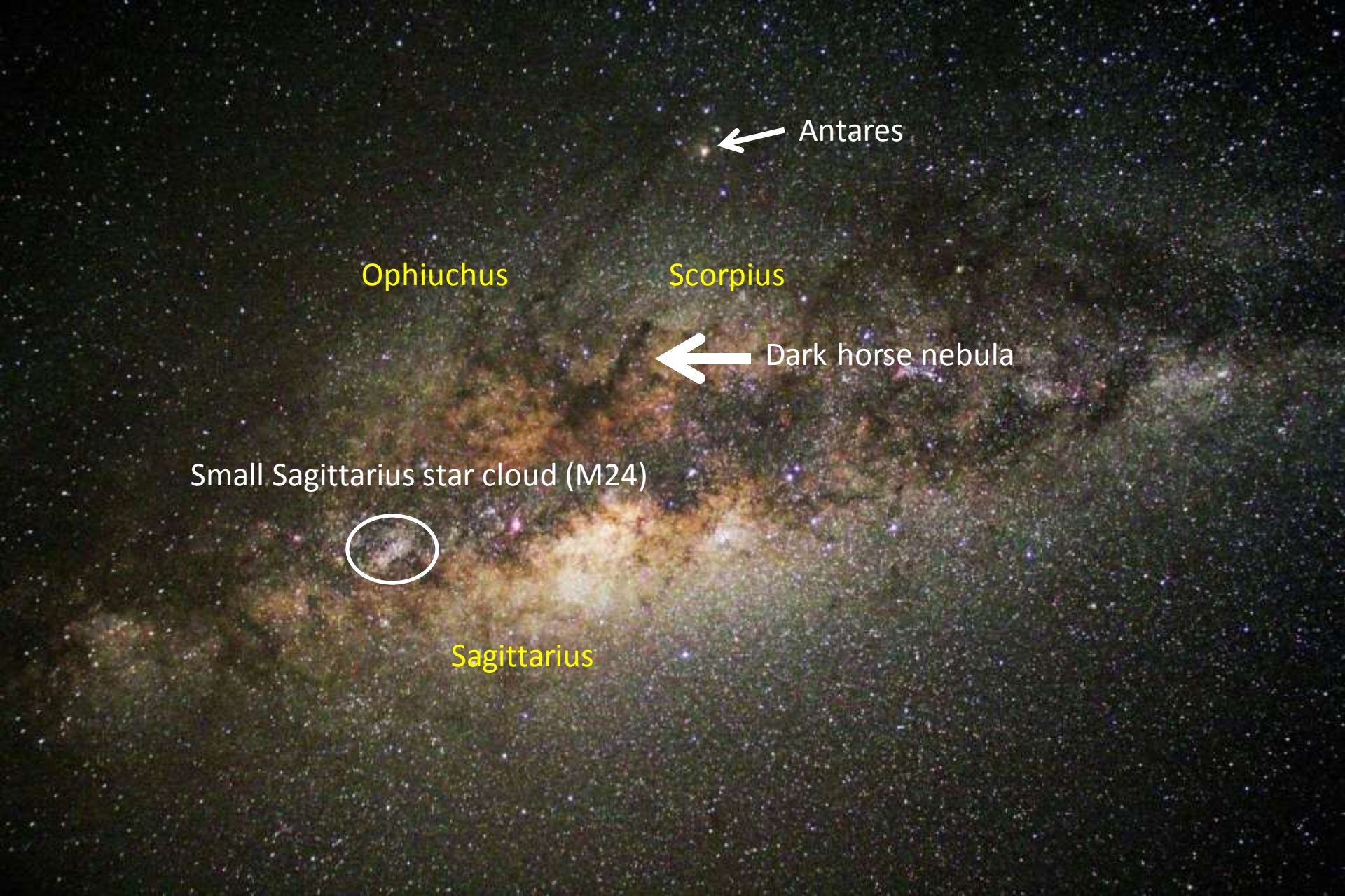


# FAS Guide to the Southern Milky Way

J.R. Leyendecker



← Antares

Ophiuchus

Scorpius

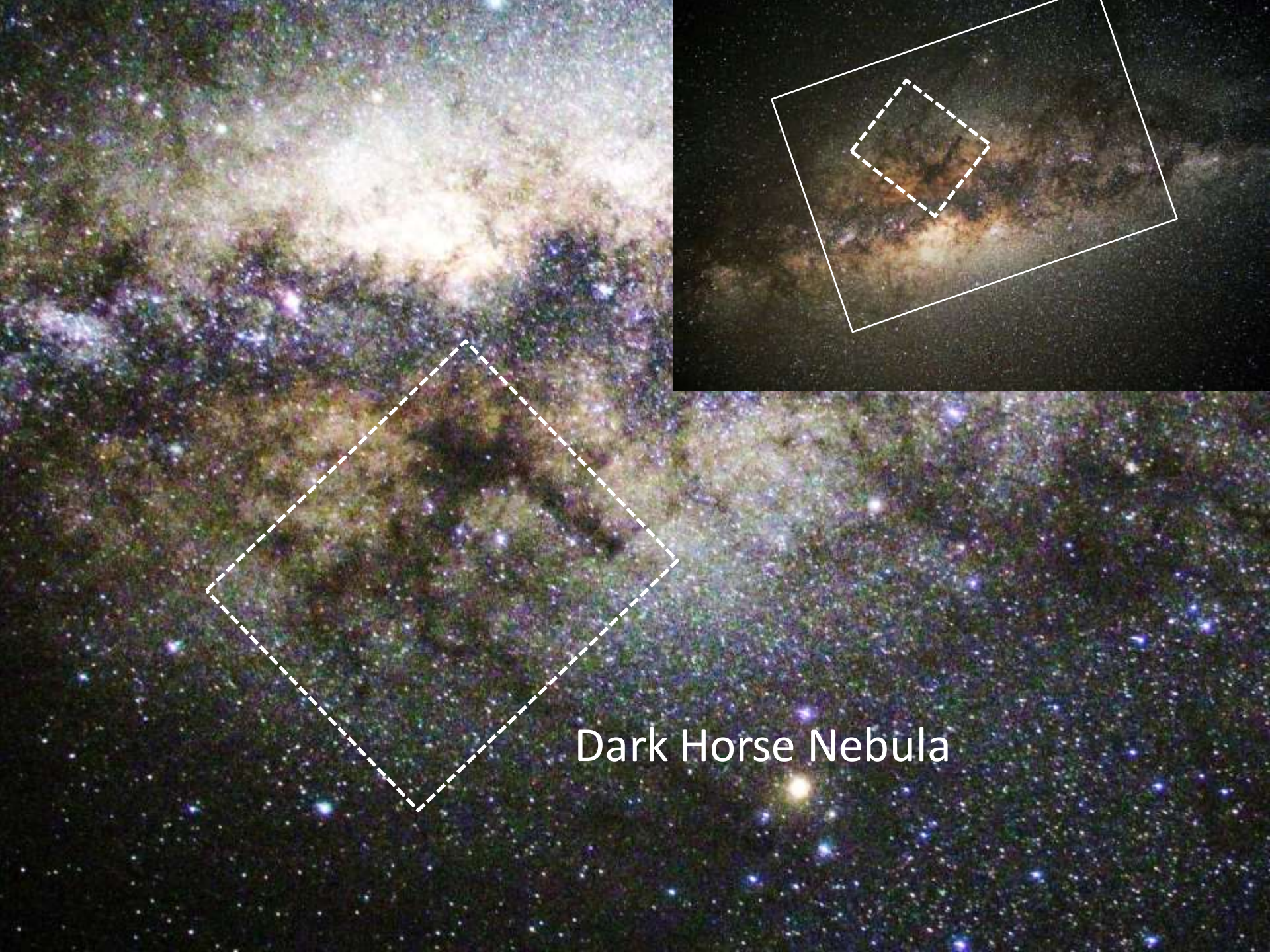
← Dark horse nebula

Small Sagittarius star cloud (M24)

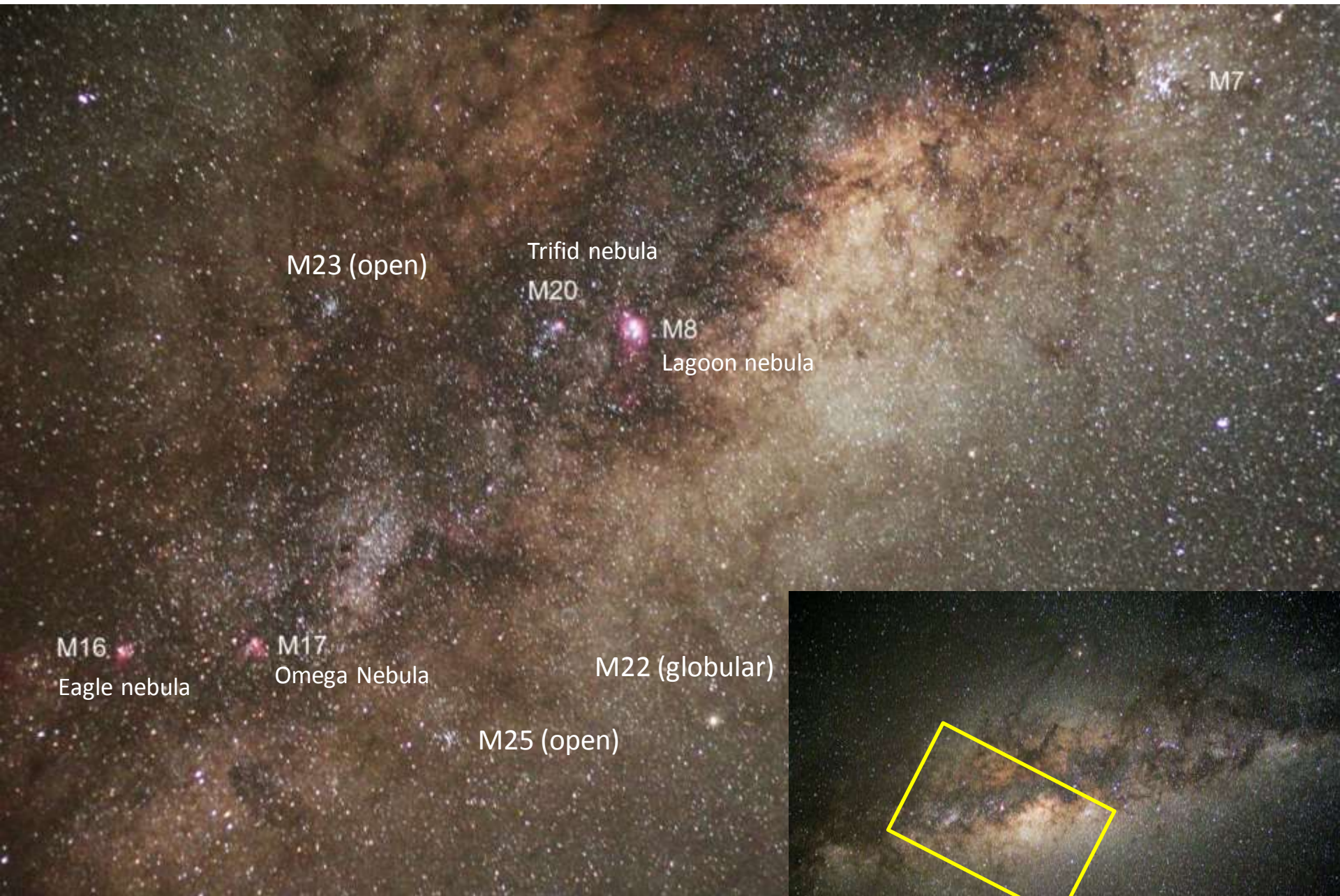


Sagittarius

Milky way



Dark Horse Nebula



M23 (open)

Trifid nebula

M20

M8

Lagoon nebula

M7

M16

Eagle nebula

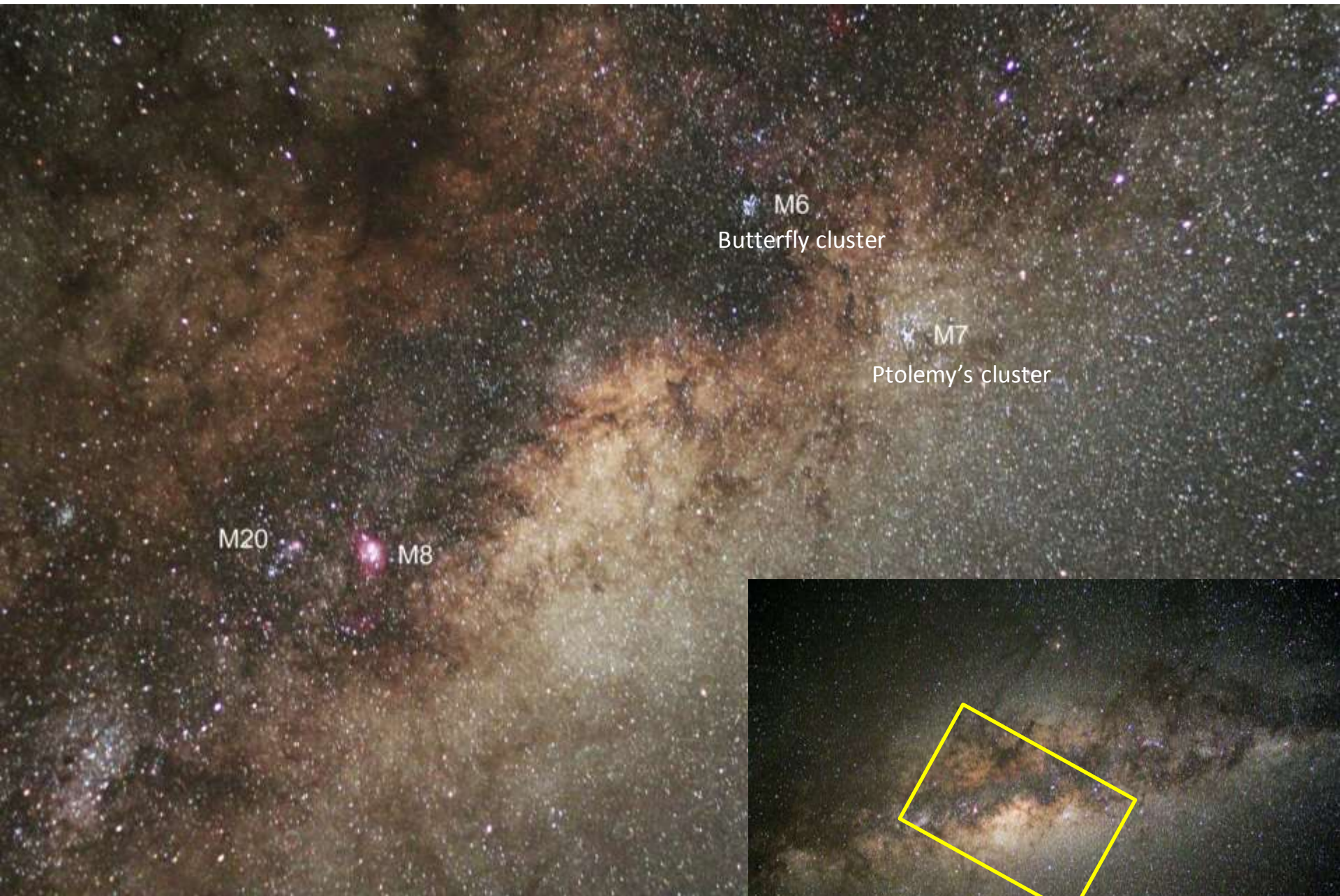
M17

Omega Nebula

M22 (globular)

M25 (open)





M6  
Butterfly cluster

M7  
Ptolemy's cluster

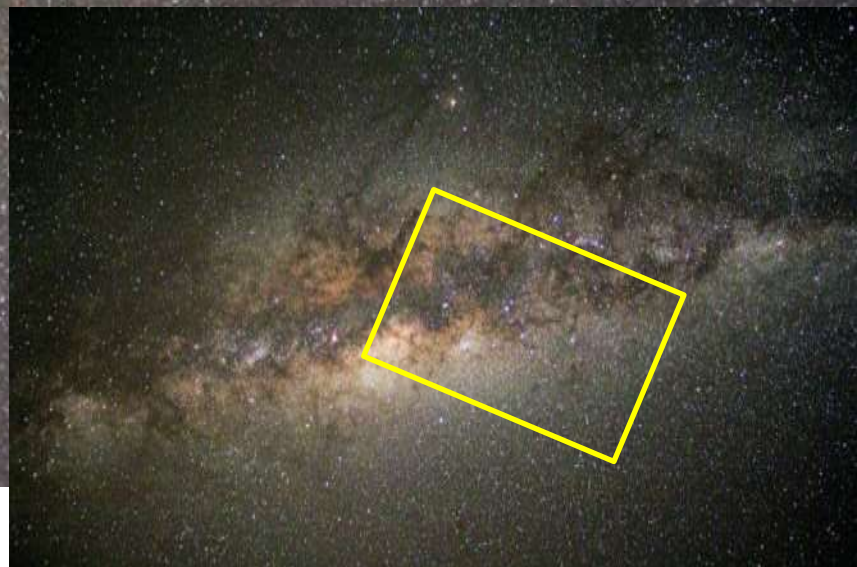
M20

M8





NGC 6352  
C81  
Globular cluster  
Mag. 8.0





IC 4628 Prawn nebula

NGC 6334



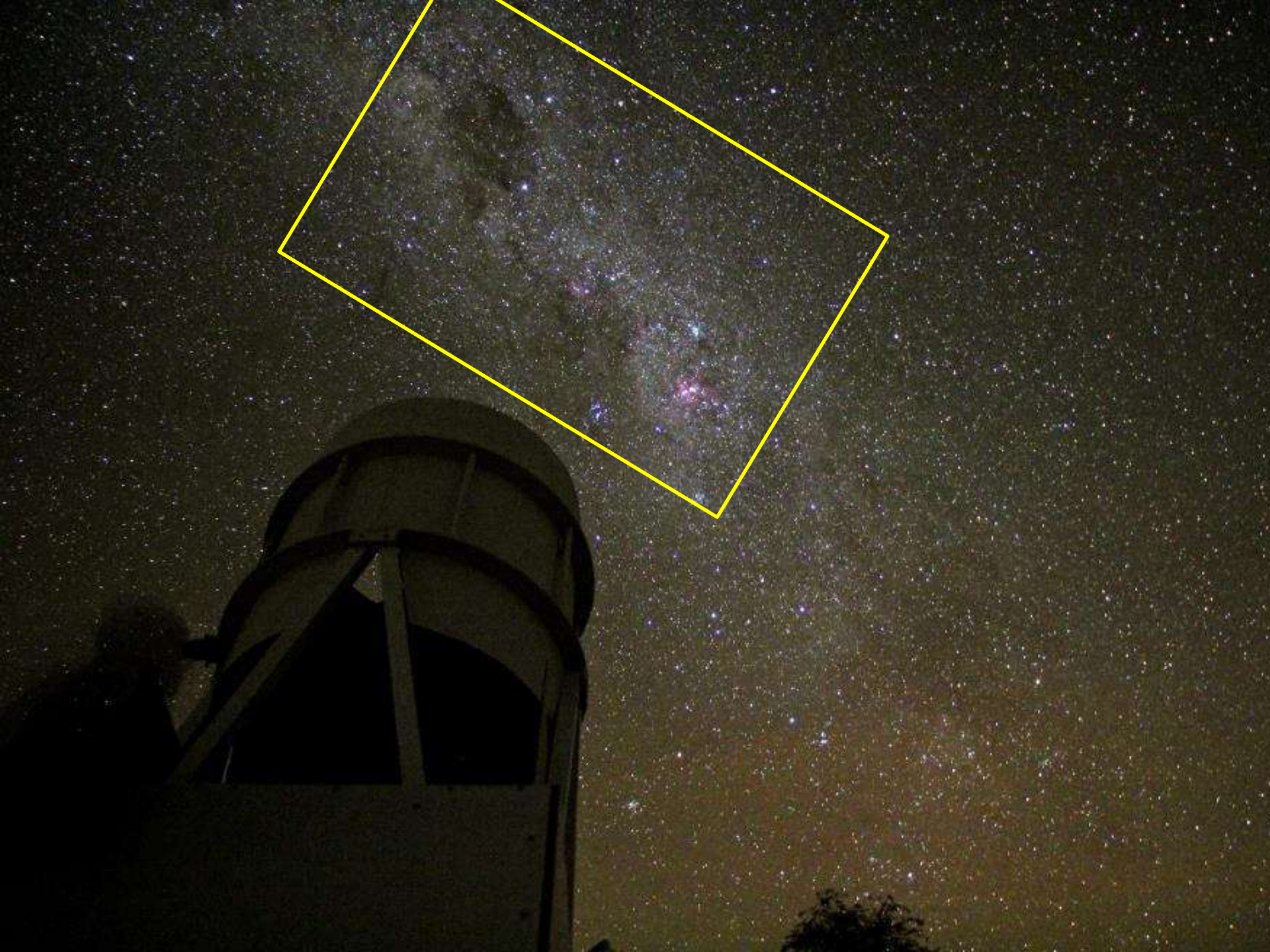
Rho Ophiuchi Complex

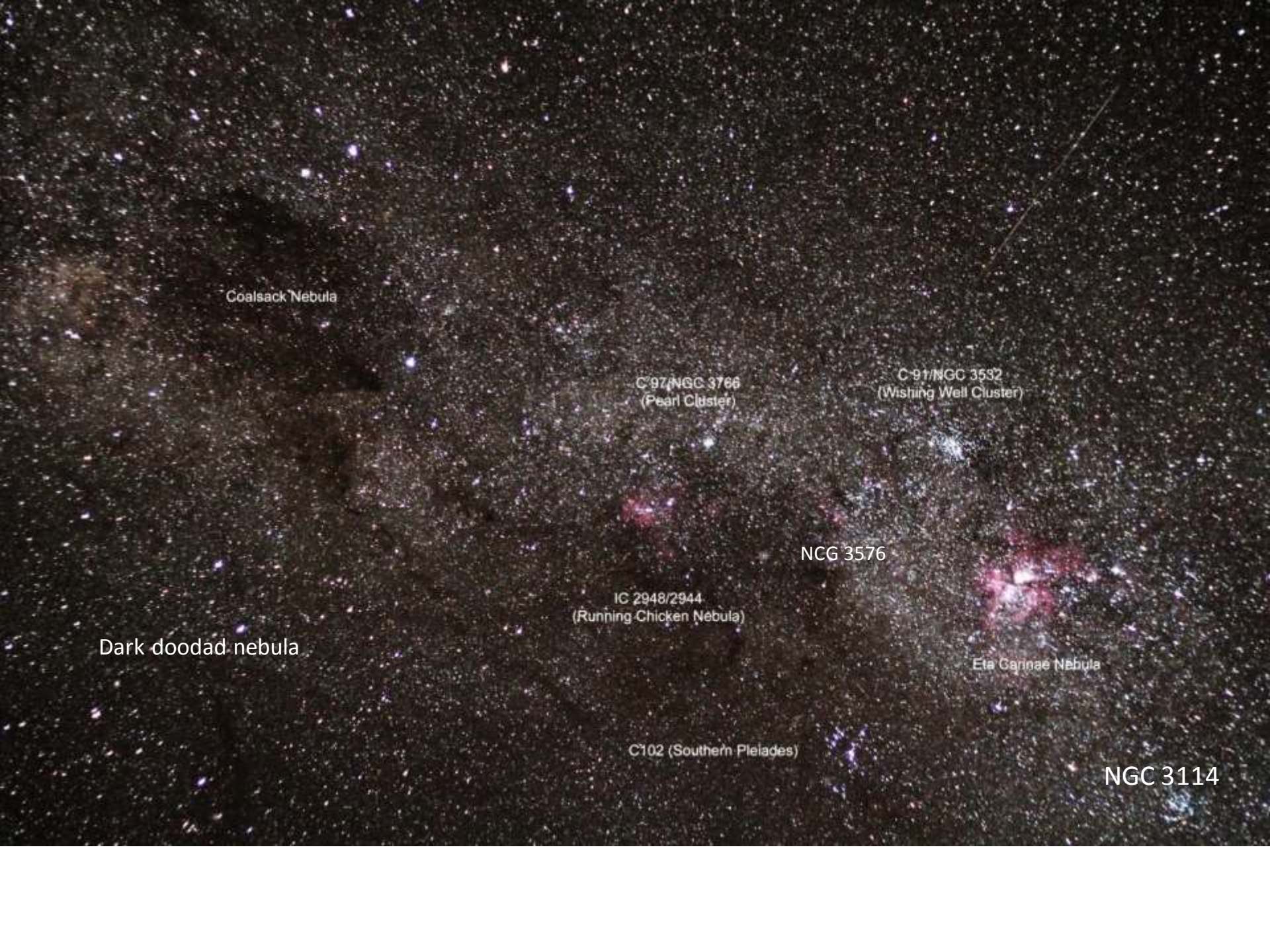
↙ M4 (globular cluster, mag. 5.9)

← Antares









Coalsack Nebula

C 97/NGC 3766  
(Pearl Cluster)

C 91/NGC 3532  
(Wishing Well Cluster)

NGC 3576

IC 2948/2944  
(Running Chicken Nebula)

Eta Carinae Nebula

Dark doodad nebula

C102 (Southern Pleiades)

NGC 3114



Dark Doodad Nebula

NGC 4372

Mag. 7.2 Constellation Musca

C97, NGC 3766  
Pearl cluster

C91, NGC 3532  
Wishing well cluster

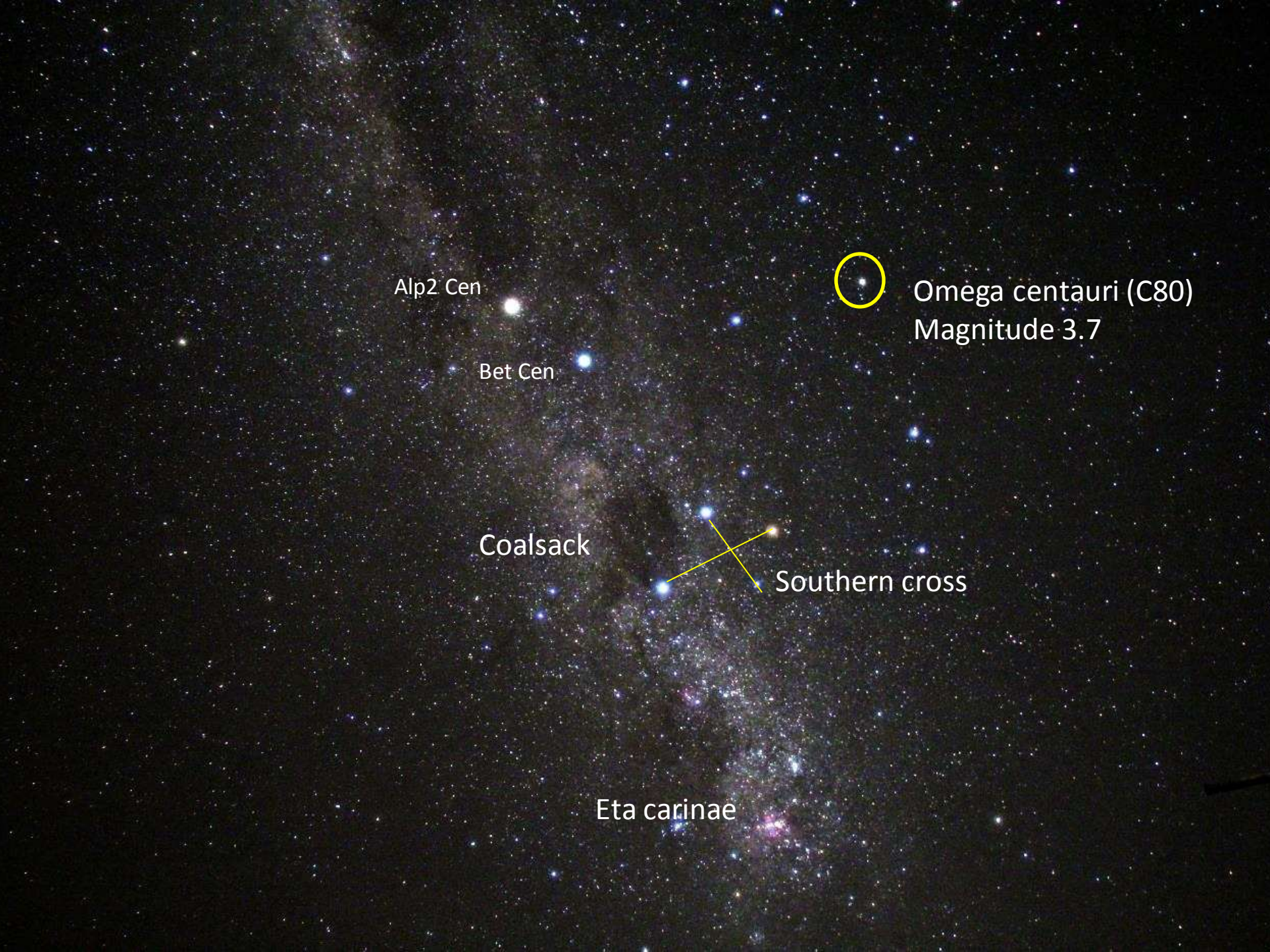
NGC 3576

IC 2948/2944  
Running chicken nebula

Eta Carinae nebula

NGC 3114





Alp2 Cen

Bet Cen

Coalsack

Eta carinae

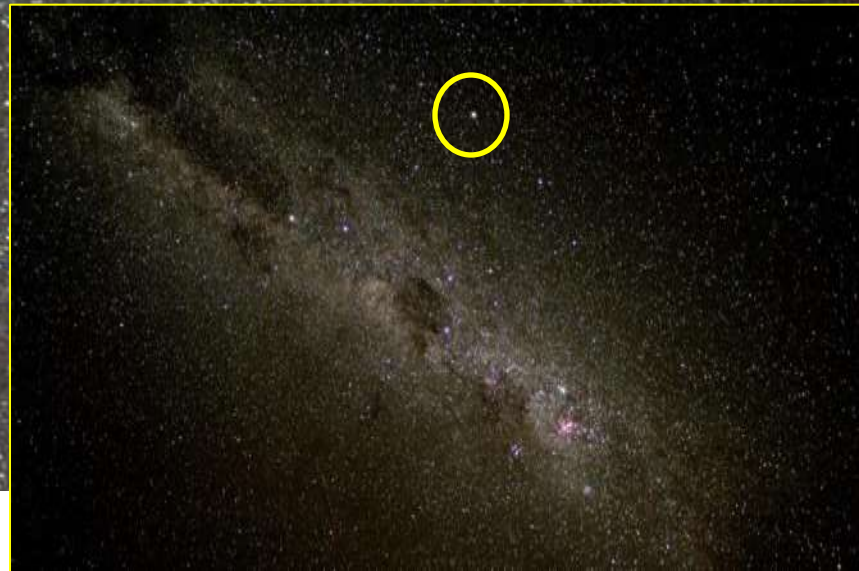


Omega centauri (C80)  
Magnitude 3.7

Southern cross




Omega centauri





Centaurus A  
Magnitude 6.98

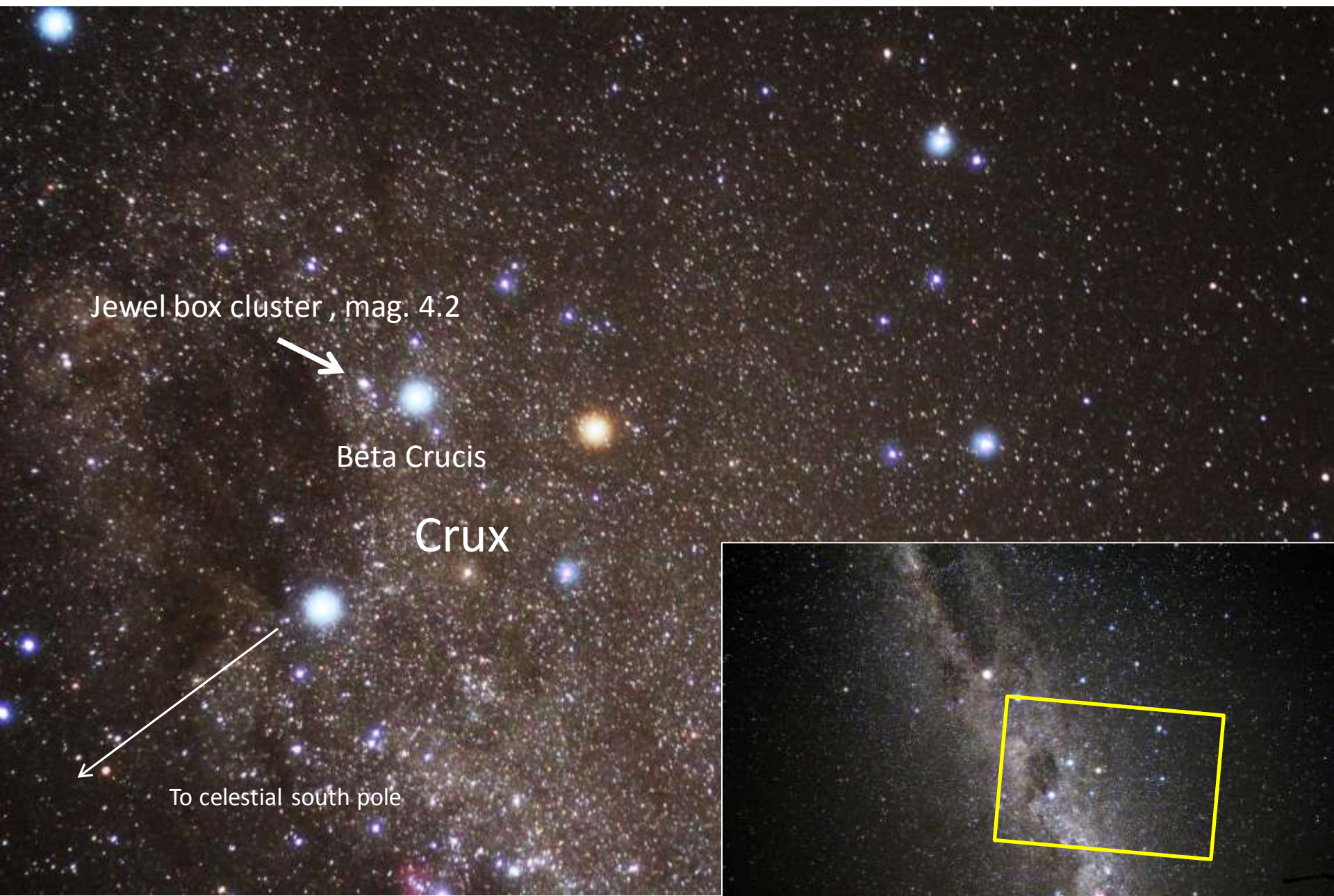
Omega Centauri

A field of stars, likely a star cluster or galaxy core, showing a dense population of stars in various colors (white, yellow, red, blue, purple). A prominent bright white star is visible in the upper left. A fainter star in the lower right is highlighted with a white arrow.

Omega Centauri

NGC 4945  
Magnitude 9.3





Jewel box cluster , mag. 4.2

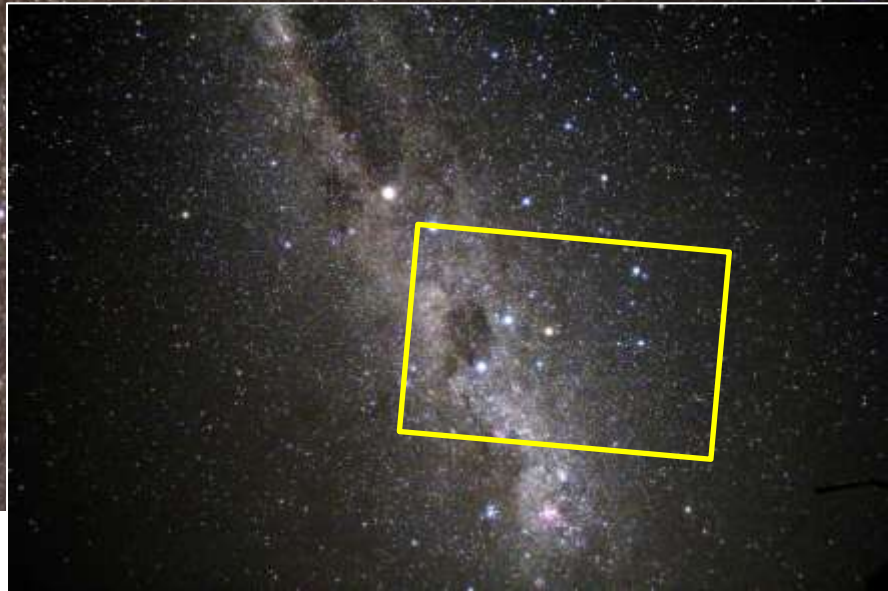


Beta Crucis

Crux



To celestial south pole



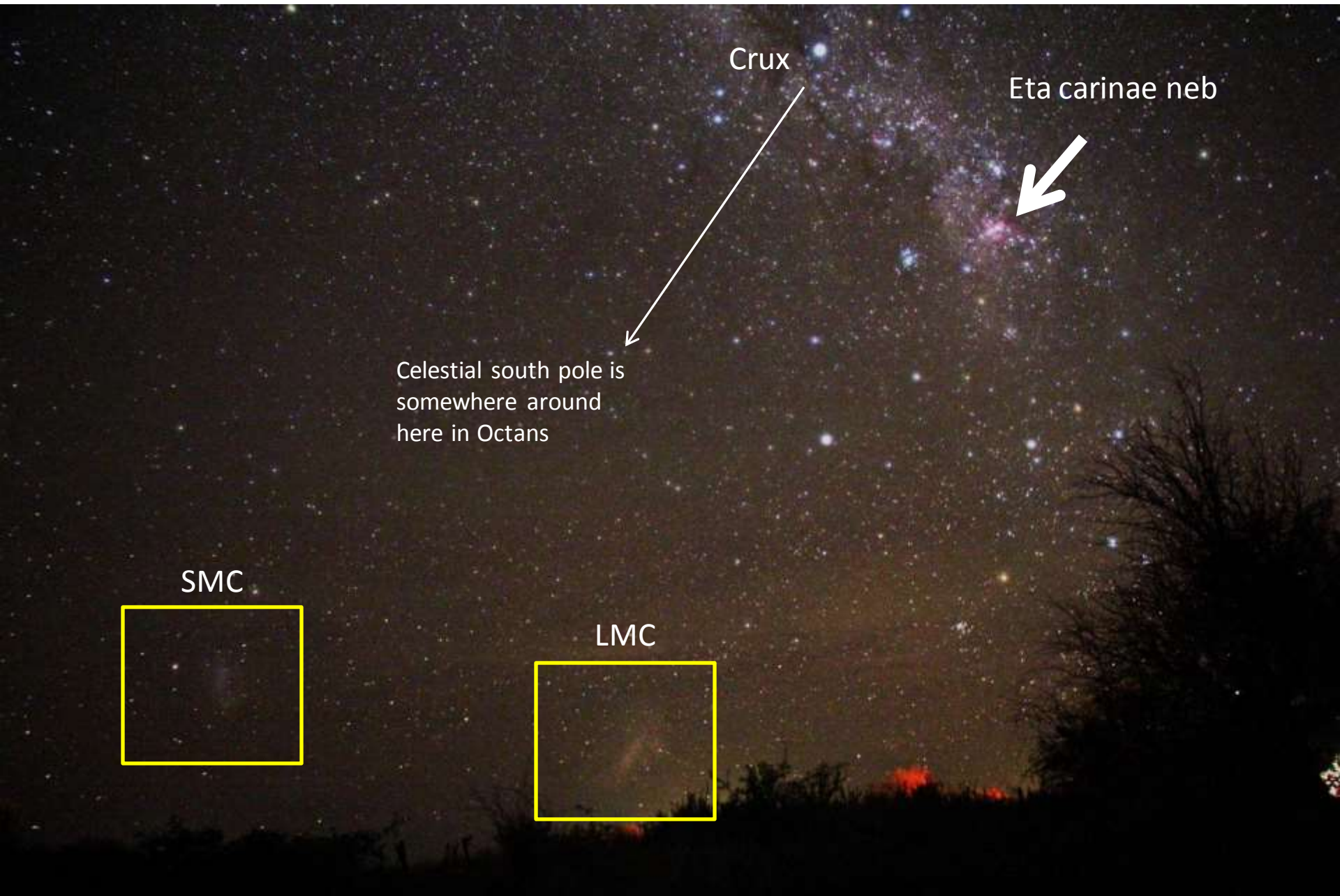
Crux

Eta carinae neb

Celestial south pole is  
somewhere around  
here in Octans

SMC

LMC





47 Tucanae

Small Magellanic Cloud



Large Magellanic cloud